

MAXUP Product Series



Standard Configuration

- Curtis Controller
- EPS
- AC Drive System
- Mechanical Disk Brake
- Solid Pu Wheel
- Side Pull Battery Design
- Mast Buffering System
- Slope Auxiliary Regenerative Braking System
- Intelligent Charger
- LED Head Lamp

Options

- Drive Wheel Position Display
- Multi-functional Instrument
- Solid Rubber Tyre
- Camera
- Side Shifter
- Carpet Booms Etc Attachments
- Special Used For Drive-in Rack
- Cold Storage Use
- AGV

Agent / Distributor

KSS TRILLION GROUP CO.,LTD

Tel:+87-716-4994

Email:kss@ksstrilliongroup.com

Add: 111/4 Moo.11 Bangpla , Bangplee, Samutprakran
10540 Thailand



ELECTRIC REACH TRUCK (Stand on)

MF10/12/15/15D
MF20/25/30

PRODUCT SPECIFICATION

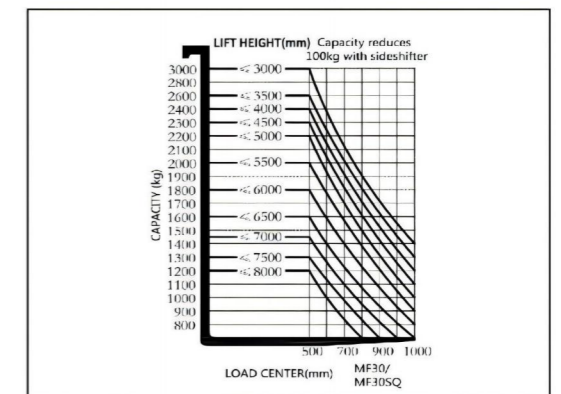
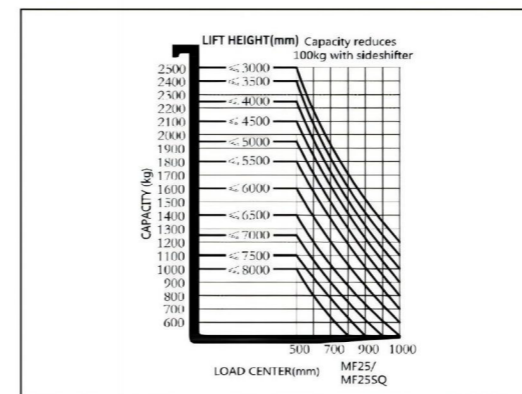
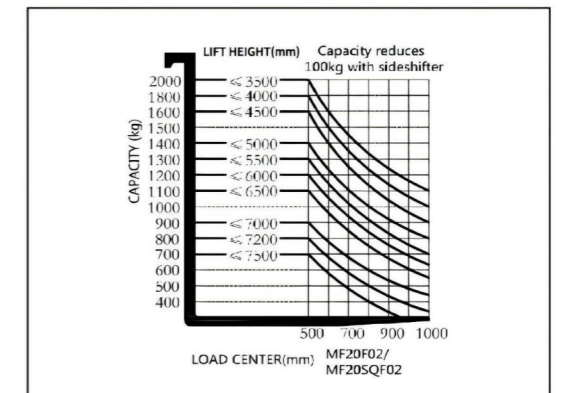
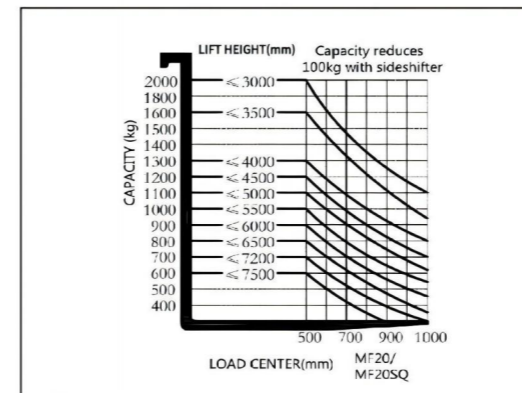
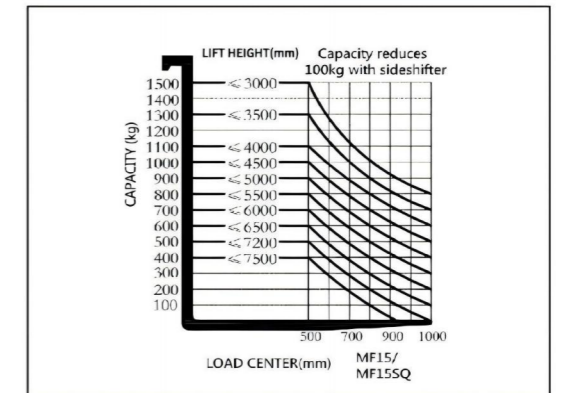
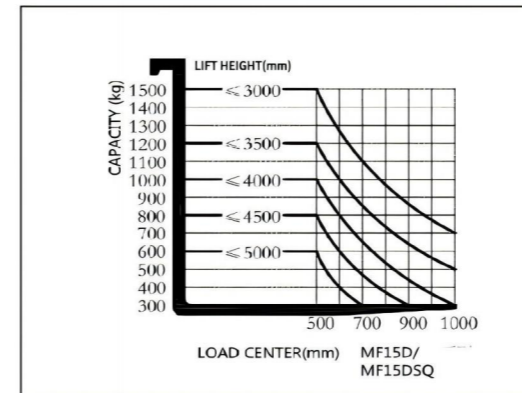
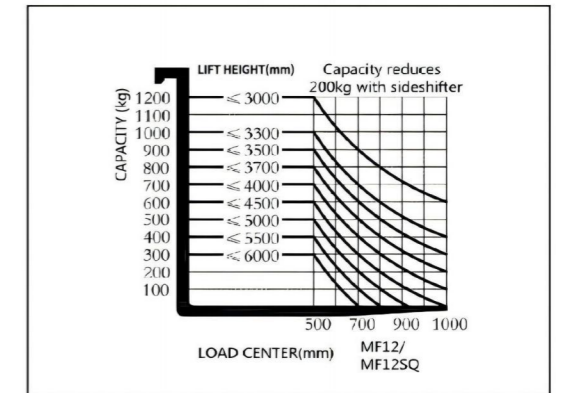
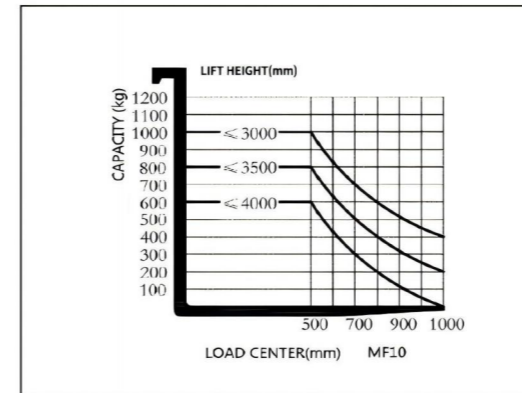
Standard										
1.1	Manufacturers			MAXLIP	MAXLIP	MAXLIP	MAXLIP	MAXLIP	MAXLIP	MAXLIP
1.2	Model			MF10	M1MF12	M1MF12SQ	M1MF15D	M1MF15DSQ	M1MF15	M1MF15SQ
1.3	Power Type			Battery	Battery	Battery	Battery	Battery	Battery	Battery
1.4	Operation Type			Stand-on	Stand-on	Stand-on	Stand-on	Stand-on	Stand-on	Stand-on
1.5	Rated Capacity	Q(kg)		1000	1200	1200	1500	1500	1500	1500
1.6	Load Center	C(mm)		500	500	500	500	500	500	500
1.7	Front Overhang	x(mm)		130	140	140	140	140	180	180
1.8	Wheelbase	y(mm)		1170	1270	1270	1345	1345	1345	1345
Weight										
2.1	Service weight (incl. battery)	kg		1750	2000	2250	2100	2350	2450	2850
2.2	Bridge load at no load, drive side / load side	kg		1210/540	1440/560	1550/700	/	/	1625/825	1900/950
2.3	Bridge load at full load, fork moving forward, drive side / Load side	kg		430/2320	570/2630	580/2870	/	/	660/3290	600/3750
2.4	Bridge load at full load, fork retracted, drive side / load side	kg		1120/1630	1420/1780	1500/1950	/	/	1510/2440	1600/2750
Tyre										
3.1	Wheel type			PU	PU	PU	PU	PU	PU	PU
3.2	Loading wheel	mm		Φ210×85	Φ210×85	Φ210×85	Φ210×85	Φ210×85	Φ254×104	Φ254×104
3.3	Driving wheel	mm		Φ230×110	Φ230×110	Φ230×110	Φ230×110	Φ230×110	Φ343×108	Φ343×108
3.4	Stable wheel size	mm		Φ180×76	Φ180×76	Φ180×76	Φ180×76	Φ180×76	Φ180×76	Φ180×76
3.5	Tyres, front/rear			2/1 x+2	2/1 x+2	2/1 x+2	2/1 x+2	2/1 x+2	2/1 x+2	2/1 x+2
3.6	Tread, drive	b10(mm)		615	615	615	615	615	680	680
3.7	Tread, load	b11(mm)		899	899	999	999	999	964	1064
Dimensions										
4.1	Tilt of fork, Forward/Backward	α/β(°)		/	3/5	3/5	3/5	3/5	3/5	3/5
4.2	Height of mast closed	h1(mm)		1980	2080	2080	2080	2080	2082	2142
4.3	Full free lifting height	h2(mm)		/	/	1480	/	1480	400	1542
4.4	Lifting height	h3(mm)		3000	3000	4500	3000	4500	3000	4500
4.5	Height of mast open (incl. Load-Backrest)	h4(mm)		3925	3960	5455	3960	5455	3960	5460
4.6	Overhead guard height	h6(mm)		2250	2250	2250	2250	2250	2250	2250
4.7	Pedal height	h7(mm)		300	300	300	300	300	300	300
4.8	Overall length	l1(mm)		1864	2059	2089	2070	2098	2259	2284
4.9	Overall Width	b1/b2(mm)		1000	1000	1084/1000	1084/1000	1084/1000	1090	1090/1170
4.10	Fork Dimensions	l/e/s(mm)		920/100/35	1070/100/35	1070/100/35	1070/100/35	1070/100/35	1070/100/35	1070/100/35
4.11	Width of Load-Backrest	b3(mm)		804	964	964	964	964	1088	1088
4.12	Width across forks	b5(mm)		220-610	220-610	220-610	220-610	220-610	222-650	222-750
4.13	Inner spacing of the legs	b4(mm)		722	722	822	822	822	750	856
4.14	Forward distance	l4(mm)		550	618	590	696	669	550	525
4.15	Mast clearance	m1(mm)		80	80	80	80	80	82	82
4.16	Aisle width for pallet 1000*1200 crossway	Ast(mm)		2428	2488	2507	2528	2545	2670	2688
4.17	Aisle width for pallet 800*1200 crossway	Ast(mm)		2470	2518	2543	2540	2564	2718	2740
4.18	Turning radius	Wa(mm)		1394	1492	1492	1580	1580	1594	1594
Function										
5.1	Driving speed(load/unload)	km/h		6/7	7/8	7/8	7/8	7/8	9/10	9/10
5.2	Lifting speed(load/unload)	mm/s		110/160	150/190	130/190	150/190	100/190	240/400	200/350
5.3	Lowering speed(load/unload)	mm/s		210/190	190/170	170/130	190/170	170/130	300/270	320/280
5.4	Max. climbing ability	%(tanθ)		≤8/≤10	≤10	≤10	≤8/≤10	≤8/≤10	≤10	≤10
5.5	Brake type			Mechanical	Mechanical	Mechanical	Mechanical	Mechanical	Mechanical	Mechanical
Power										
6.1	Driving motor	kw		1.5	2.3	2.3	2.3	2.3	4.5	4.5
6.2	Lifting motor	kw		2	3.5	3.5	3.5	3.5	7.5	7.5
6.3	Battery Voltage/capcity	V/Ah		24/280	24/350	24/420	24/420	24/420	48/300	48/300
6.4	Battery weight	kg		260	300	335	335	335	500	500
6.5	Steering system			EPS	EPS	EPS	EPS	EPS	EPS	EPS
Other										
7.1	Battery Change Type			slide change	slide change	slide change	slide change	slide change	slide change	slide change

Standard										
1.1	Manufacturers			MAXLIP	MAXLIP	MAXLIP	MAXLIP	MAXLIP	MAXLIP	MAXLIP
1.2	Model			M1MF20	M1MF20SQ	M1MF25	M1MF25SQ	M1MF30	M1MF30SQ	
1.3	Power Type			Battery	Battery	Battery	Battery	Battery	Battery	
1.4	Operation Type			Stand-on	Stand-on	Stand-on	Stand-on	Stand-on	Stand-on	
1.5	Rated Capacity	Q(kg)		2000	2000	2500	2500	3000	3000	3000
1.6	Load Center	C(mm)		500	500	500	500	500	500	500
1.7	Front Overhang	x(mm)		180	180	183.5	181	183.5	181	181
1.8	Wheelbase	y(mm)		1545	1545	1720	1720	1920	1920	1920
Weight										
2.1	Service weight (incl. battery)	kg		2750	2950	3300	3580	3400	3680	
2.2	Bridge load at no load, drive side / load side	kg		/	/	/	/	/	/	/
2.3	Bridge load at full load, fork moving forward, drive side / Load side	kg		/	/	/	/	/	/	/
2.4	Bridge load at full load, fork retracted, drive side / load side	kg		/	/	/	/	/	/	/
Tyre										
3.1	Wheel type			PU	PU	PU	PU	PU	PU	PU
3.2	Loading wheel	mm		Φ254×104	Φ254×104	Φ267×135	Φ267×135	Φ267×135	Φ267×135	Φ267×135
3.3	Driving wheel	mm		Φ343×108	Φ343×108	Φ380×165	Φ380×165	Φ380×165	Φ380×165	Φ380×165
3.4	Stable wheel size	mm		Φ180×76	Φ180×76	Φ204×76	Φ204×76	Φ204×76	Φ204×76	Φ204×76
3.5	Tyres, front/rear			2/1 x+2	2/1 x+2	2/1 x+2	2/1 x+2	2/1 x+2	2/1 x+2	2/1 x+2
3.6	Tread, drive	b10(mm)		680	680	726	726	726	726	726
3.7	Tread, load	b11(mm)		1064	1064	1135	1135	1135	1135	1135
Dimensions										
4.1	Tilt of fork, Forward/Backward	α/β(°)		3/5	3/5	3/5	2/6	3/5	2/6	
4.2	Height of mast closed	h1(mm)		2082	2142	2082	2292	2082	2292	
4.3	Full free lifting height	h2(mm)		80	1542	80	1550	80	1550	
4.4	Lifting height	h3(mm)		3000	4500	3000	4500	3000	4500	
4.5	Height of mast open (incl. Load-Backrest)	h4(mm)		3960	5460	3960	5460	4050	5550	
4.6	Overhead guard height	h6(mm)		2250	2250	2300	2300	2300	2300	
4.7	Pedal height	h7(mm)		300	300	350	350	350	350	
4.8	Overall length	l1(mm)		2293	2330	2387	2436	2487	2536	
4.9	Overall Width	b1/b2(mm)		1090/1170	1090/1170	1190/1270	1190/1270	1190/1270	1190/1270	
4.10	Fork Dimensions	l/e/s(mm)		1070/100/40	1070/100/40	1070/100/45	1070/100/45	1070/125/45	1070/125/45	
4.11	Width of Load-Backrest	b3(mm)		1088	1088	1088	1088	1148	1148	
4.12	Width across forks	b5(mm)		222-750	222-750	222-750	222-750	250-750	250-750	
4.13	Inner spacing of the legs	b4(mm)		856	856	892	892	892	892	
4.14	Forward distance	l4(mm)		717	677	825	775	925	875	
4.15	Mast clearance	m1(mm)		82	82	82	82	82	82	
4.16	Aisle width for pallet 1000*1200 crossway	Ast(mm)		2750	2773	2894	2919	3045	3066	
4.17	Aisle width for pallet 800*1200 crossway	Ast(mm)		2762	2793	2883	2921	3003	3039	
4.18	Turning radius	Wa(mm)		1784	1784	1995	1995	2192	2192	
Function										
5.1	Driving speed(load/unload)	km/h		9/10	9/10	9/10	9/10	8/10	8/10	
5.2	Lifting speed(load/unload)	mm/s		220/380	180/330	240/320	220/300	220/320	200/300	
5.3	Lowering speed(load/unload)	mm/s		310/260	290/240	340/290	310/260	340/290	310/260	
5.4	Max. climbing ability	%(tanθ)		≤10	≤10	≤10	≤10	≤10	≤10	
5.5	Brake type			Mechanical	Mechanical	Mechanical	Mechanical	Mechanical	Mechanical	
Power										
6.1	Driving motor	kw		4.5	4.5	5.5	5.5	5.5	5.5	
6.2	Lifting motor	kw		7.5	7.5	8.6	8.6	8.6	8.6	
6.3	Battery Voltage/capcity	V/Ah		48/300	48/300	48/400	48/400	48/400	48/400	
6.4	Battery weight	kg		500	500	650	650	650	650	
6.5	Steering system			EPS	EPS	EPS	EPS	EPS	EPS	
Other										
7.1	Battery Change Type			slide change	slide change	slide change	slide change	slide change	slide change	

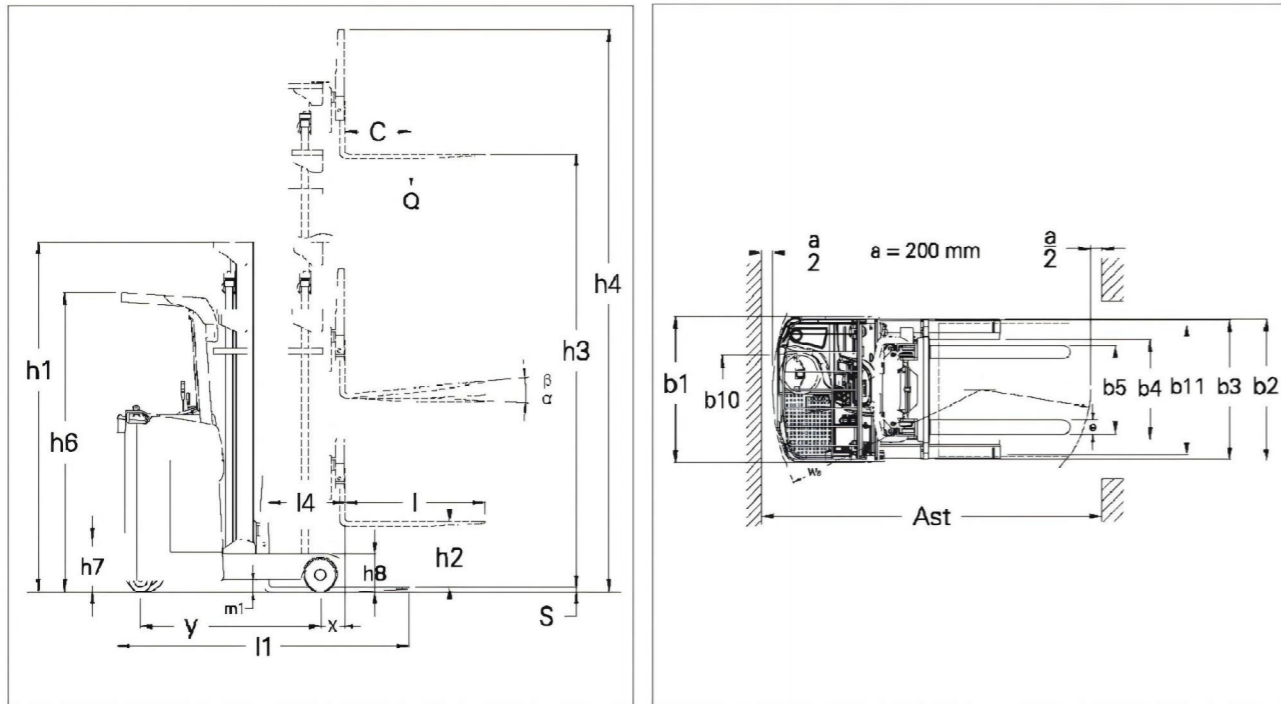
MAST SPECIFICATION

Duplex Mast		MF10				MF12			
Model	MF	10-30	10-35	10-40	12-30	12-35	12-40	12-45	
Lift height	h3(mm)	3000	3500	4000	3000	3500	4000	4500	
Height-Mast Extended w/ Load-Backrest	h4(mm)	3925	4425	4925	3960	4460	4960	5460	
Height---Mast Lowered	h1(mm)	1980	2230	2480	2080	2330	2630	2880	
Triplex full free Mast		MF12							
Model	MF	12SQ-45	12SQ-50	12SQ-55	12SQ-60				
Lift height	h3(mm)	4500	5000	5500	6000				
Height-Mast Extended w/ Load-Backrest	h4(mm)	5455	5955	6455	6955				
Height---Mast Lowered	h1(mm)	2080	2247	2413	2580				
Height--Free Lift	h2(mm)	1480	1647	1813	1980				
Duplex Mast		MF15				MF15D			
Model	MF	15-30	15-35	15-40	15-45	15D-30	15D-35	15D-40	15D-45
Lift height	h3(mm)	3000	3500	4000	4500	3000	3500	4000	4500
Height-Mast Extended w/ Load-Backrest	h4(mm)	3960	4460	4960	5460	3960	4460	4960	5460
Height Mast Lowered	h1(mm)	2082	2332	2632	2882	2080	2330	2630	2880
Height--Free Lift	h2(mm)	400	400	400	400	0	0	0	0
Triplex full free Mast		MF15D							
Model	MF	15DSQ-45	15DSQ-50						
Lift height	h3(mm)	4500	5000						
Height-Mast Extended w/ Load-Backrest	h4(mm)	5455	5955						
Height---Mast Lowered	h1(mm)	2080	2247						
Height--Free Lift	h2(mm)	1480	1647						
Triplex full free Mast		MF15							
Model	MF	15SQ-45	15SQ-50	15SQ-55	15SQ-60	15SQ-65	15SQ-70	15SQ-75	
Lift height	h3(mm)	4500	5000	5500	6000	6500	7000	7500	
Height-Mast Extended w/ Load-Backrest	h4(mm)	5460	5960	6460	6960	7460	7960	8460	
Height---Mast Lowered	h1(mm)	2142	2309	2475	2642	2809	2975	3142	
Height Free Lift	h2(mm)	1542	1709	1875	2042	2209	2375	2542	
Duplex Mast		MF20				MF25			
Model	MF	20-30	20-35	20-40	20-45	25-30	25-35	25-40	25-45
Lift height	h3(mm)	3000	3500	4000	4500	3000	3500	4000	4500
Height-Mast Extended w/ Load-Backrest	h4(mm)	3960	4460	4960	5460	3960	4460	4960	5460
Height---Mast Lowered	h1(mm)	2082	2332	2632	2882	2082	2332	2632	2882
Height--Free Lift	h2(mm)	80	80	80	80	80	80	80	80
Triplex full free Mast		MF20							
Model	MF	20SQ-45	20SQ-50	20SQ-55	20SQ-60	20SQ-65	20SQ-70	20SQ-75	
Lift height	h3(mm)	4500	5000	5500	6000	6500	7000	7500	
Height-Mast Extended w/ Load-Backrest	h4(mm)	5460	5960	6460	6960	7460	7960	8460	
Height---Mast Lowered	h1(mm)	2142	2309	2475	2642	2809	2975	3142	
Height Free Lift	h2(mm)	1542	1709	1875	2042	2209	2375	2542	
Triplex full free Mast		MF25							
Model	MF	25SQ-45	25SQ-50	25SQ-55	25SQ-60	25SQ-65	25SQ-70	25SQ-75	25SQ-80
Lift height	h3(mm)	4500	5000	5500	6000	6500	7000	7500	8000
Height-Mast Extended w/ Load-Backrest	h4(mm)	5460	5960	6460	6960	7460	7960	8460	8960
Height---Mast Lowered	h1(mm)	2292	2459	2625	2792	2959	3125	3292	3559
Height--Free Lift	h2(mm)	1550	1716	1884	2050	2216	2384	2550	2816
Duplex Mast		MF30							
Model	MF	30-30	30-35	30-40	30-45				
Lift height	h3(mm)	3000	3500	4000	4500				
Height-Mast Extended w/ Load-Backrest	h4(mm)	4050	4550	5050	5550				
Height---Mast Lowered	h1(mm)	2082	2332	2632	2882				
Height--Free Lift	h2(mm)	80	80	80	80				
Triplex full free Mast		MF30							
Model	MF	30SQ-45	30SQ-50	30SQ-55	30SQ-60	30SQ-65	30SQ-70	30SQ-75	30SQ-80
Lift height	h3(mm)	4500	5000	5500	6000	6500	7000	7500	8000
Height-Mast Extended w/ Load-Backrest	h4(mm)	5550	6050	6550	7050	7550	8050	8550	9050
Height---Mast Lowered	h1(mm)	2292	2459	2625	2792	2959	3125	3292	3559
Height--Free Lift	h2(mm)	1550	1716	1884	2050	2216	2384	2550	2816

LOAD CHART



Product size



PRODUCT DESCRIPTION

- The loading capacity of MF series reach truck is 1.0T-3.0T, the mast moves forward and retract as a whole, body structure is compact, the aisle is small, and turning flexible.
- Horizontal handling and stacking of medium cargo;
- Handling and stacking for medium and long distances;
- High performance mast, suitable for all the warehouses with medium and high shelf, meet the requirements of various high efficiency storage conditions.



Single-deck Pallet



Double-deck Pallet



- For single-deck/double-deck pallet with forging fork.

ELECTRIC REACH TRUCK (MF Series)



PRODUCT FEATURES

- 01 Maintenance-free and high power AC drive system provide reliable driving power;
- 02 CURTIS controller is reliable and durable; AMP waterproof and dustproof plug which gives reliable protection to the line and greatly reduces electrical faults;
- 03 Stand-on driving operation, EPS steering, easy and safe operation.
- 04 The newly designed suspension system makes the steering operation more flexible and convenient
- 05 It adopts 4 points and low gravity center design and the frame is high-strength steel structure. It has residual load capacity and long service life.

PRODUCT ADVANTAGES

